



# BERMAD ELECTRONIC REGISTER

## E-Register

BERMAD extends its commitment to provide customers with smart metering solutions designed to increase efficiencies, conserve water and improving customer service.

Our electronic register is a state of the art technology ideally suited for all applications. BERMAD's knowledge offers consumers of all types a powerful and unique solutions designed to enhance standard mechanical water meters, providing integrated communication capabilities.

Heavy duty and intended to cover a wide flow range, particularly suited for agricultural applications, BERMAD's Mechanical Water Meters consist of:

- TURBO-BAR WPH Woltman meter
- TURBO-IR Tangential meter
- 900 Series Hydrometer uniting Woltman meter with hydraulic control valve.

The smart electronic register combines encapsulated and weatherproof housing with a reliable and quality design. Our goal is to enhance our customers' ability to improve their accuracy, increase metering sensitivity, conserve energy and conversely reduce maintenance and cost.



## Features and Benefits

- Integrated intelligence Bluetooth communication
- Universal E-Register - suits all water meter types and sizes made by BERMAD
- Instant flow rate
- Forward and reverse flow indication
- Intuitive Android / iOS App
- 12 digits LCD display
- Increases savings with reduced installation and labor costs
- Plug & play installation
- Data logging capabilities
- Battery level alert indication
- Fast pulse output rate
- Support metric & imperial units of measurement
- General alert indication
- Over the air programming

## BERMAD Meters

### Merging monitoring & control





## BERMAD Mechanical Meters

All existing BERMAD water meters with mechanical magnetic registers can be upgraded to the Electronic Register



E-Register + 900 Meter

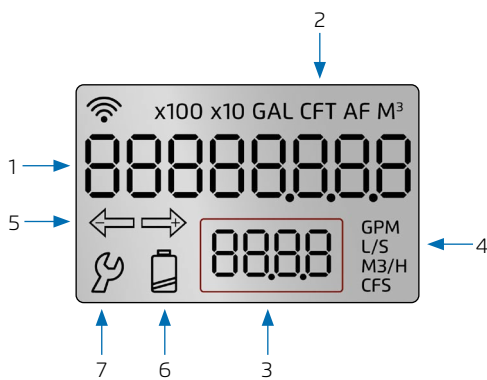


E-Register + Turbo-Bar Meter



E-Register + Turbo-IR Meter

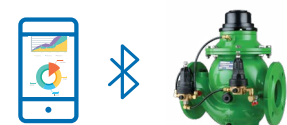
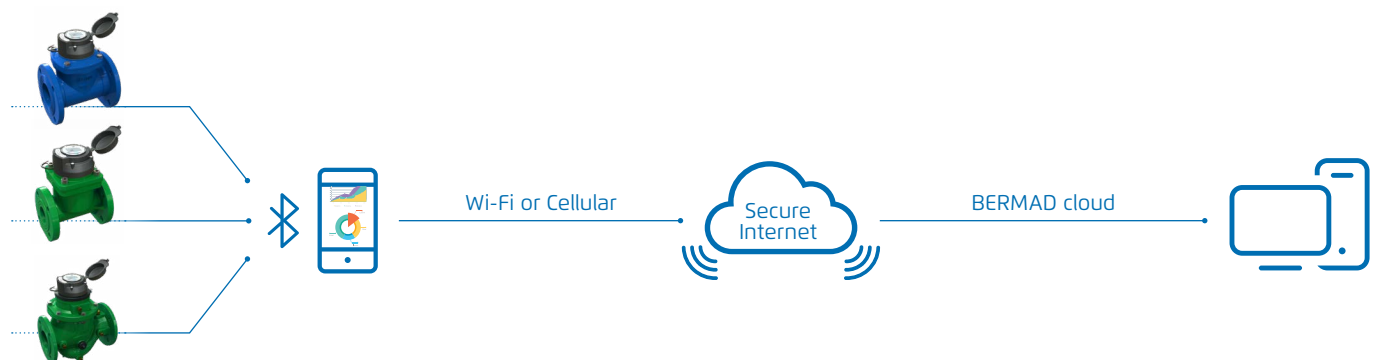
## Display



### Applicable Icons

1. Volume
2. Volume units
3. Flow Rate
4. Flow Rate units
5. Volume direction
6. Battery level indication
7. General warning

## Application



Irrigation Application

